

NOTCH1(M2011R)

Catalog Number: 26444

Gene Symbol: NOTCH1, NRF2

Description: Anti-NOTCH1(M2011R) Mouse Monoclonal Antibody

Background: NOTCH1 is a human gene encoding a single-pass transmembrane receptor. It is a member of the NOTCH family. NOTCH family members play a role in a variety of developmental processes by controlling cell fate decisions. Diseases associated with NOTCH1 include aortic valve disease 1 and adams-oliver syndrome 5, and so on. An important paralog of this gene is NOTCH2.

Immunogen: A synthetic peptide from the internal region of NOTCH1, which includes the mutation of M2011R, human origin.

Tested Applications: ELISA, WB, IF, IHC

Recommended Dilutions:

ELISA:	1:1000-1:2000
WB:	1:500-1:1000
IF:	1:50-1:100
IHC:	1:50-1:100

Concentration: 1.0 mg/ml

Host: Mouse

Clonality: Monoclonal

Isotype: IgG

Purity: Purified from ascites

Format: Liquid

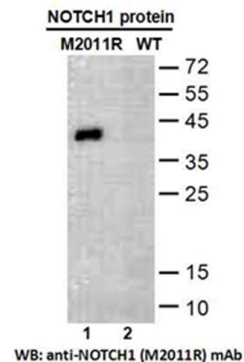
Preservative: No

Constituents: PBS (without Mg²⁺ and Ca²⁺), pH7.4, 150 mM NaCl, 50% glycerol

Species Reactivity: Recognizes NOTCH1(M2011R), but not wild type NOTCH1 protein from vertebrates.

Storage Conditions: Store at -20°C. Avoid repeated freezing and thawing

Western blot:



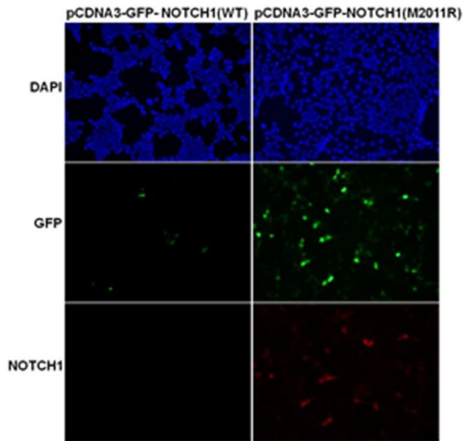
Western blot analysis of recombinant NOTCH1 (M2011R) and wildtype proteins.

Purified His-tagged NOTCH1 (M2011R) protein (lane1) and corresponding wild-type protein (lane2) were blotted with anti-NOTCH1(M2011R) monoclonal antibody (Cat. # 26444).

FOR RESEARCH USE ONLY. NOT FOR DIAGNOSTIC APPLICATIONS

A helping hand for your research

Immunofluorescence:



Immunofluorescence of cells expressing NOTCH1 proteins with anti-NOTCH1 (M2011R) antibody.

HEK293T cells were transfected with pCDNA3-GFP-NOTCH1 (WT) plasmid (left column) or pCDNA3-GFP-NOTCH1 (M2011R) plasmid (right column), then fixed and stained with anti-NOTCH1 (M2011R) monoclonal antibody (Cat. # 26444).

FOR RESEARCH USE ONLY. NOT FOR DIAGNOSTIC APPLICATIONS